

BORUZU® is approved for the treatment of patients with multiple myeloma (a cancer of plasma cells) and mantle cell lymphoma (a cancer of the lymph nodes).

  
**BORUZU**®  
(bortezomib injection)

# Discover how BORUZU® can help



Inside you will find information about:



**What is  
BORUZU®?**



**How BORUZU®  
works**



**Treatment  
expectations**



**Savings and  
support**

## IMPORTANT SAFETY INFORMATION

Do not take BORUZU® if you are allergic to bortezomib, boron, mannitol, or any of the ingredients in BORUZU®.

Please see pages 6-7 for Important Safety Information and [Boruzu.us](https://www.boruzu.us) for full Prescribing Information.



Biosciences Oncology

## ➔ What is BORUZU®?

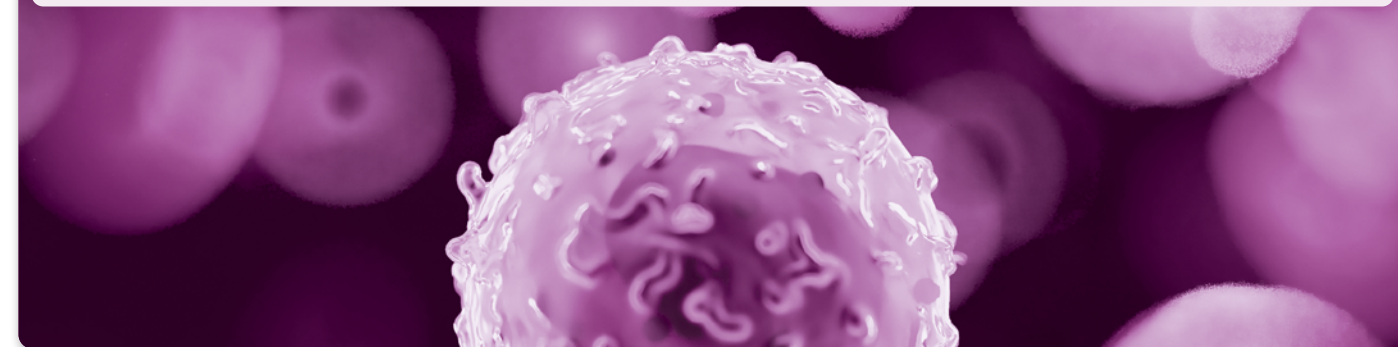


### **BORUZU® is a cancer medication.**

In combination with other cancer medications, BORUZU® is approved by the US Food and Drug Administration to treat adults with:

➤ Multiple myeloma

➤ Mantle cell lymphoma



### **BORUZU® is a brand name of the medicine bortezomib.**

BORUZU® is a form of bortezomib, the same medicine that is in Velcade® (bortezomib). BORUZU® is given as an injection by a needle subcutaneously (below the skin) or intravenously (into the vein).

Contact your healthcare provider if you have any questions about BORUZU® treatment.

Tell your healthcare provider about all the medicines you take, including prescription and over-the-counter medicines, vitamins, and herbal supplements. BORUZU® and certain other medicines can affect each other, causing serious side effects.

Please see pages 6-7 for Important Safety Information and [Boruzu.us](https://www.boruzu.us) for full Prescribing Information.

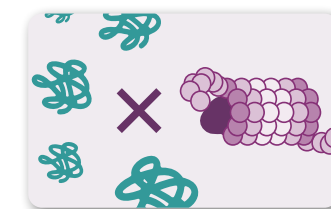
## ➔ How BORUZU® works



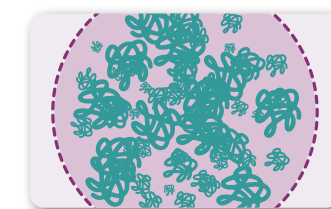
### **BORUZU® causes cancer cells to die.**

The human body is made up of trillions of cells. Normally, as they grow old or become damaged, cells will die off and be replaced by new cells. In patients with cancer, this process stops working properly and abnormal cells don't die off and continue to make new abnormal cells.

Proteasomes help cells grow and develop by breaking down and removing damaged proteins within the cells. **BORUZU® works by blocking proteasome activity. Damaged proteins then build up inside a cancer cell and cause it to die.**



BORUZU® blocking the cellular activity



Damaged proteins build up, causing cell death

### **How is BORUZU® given?**



BORUZU® may be given as an injection subcutaneously (below the skin) or intravenously (into the vein).



BORUZU® is usually prescribed in combination with other cancer medicines.



BORUZU® may be given once weekly or twice weekly.



➤ **BORUZU® is given in cycles of 3 to 6 weeks, with breaks between cycles.** The number of cycles you have depends on your overall treatment plan as determined by your doctor for your cancer type and stage.



➤ Specific treatment plans are determined by your doctor and vary based on your cancer type and stage. **Your doctor will provide you with more specific information about your treatment and a detailed schedule.**

### **IMPORTANT SAFETY INFORMATION**

**More than 1 in 5 patients (20%) receiving BORUZU® have experienced the following side effects:** nausea, diarrhea, thrombocytopenia, neutropenia, peripheral neuropathy, fatigue, neuralgia (nerve pain), anemia, leukopenia (low levels of white blood cells), constipation, vomiting, lymphopenia (low levels of a certain type of white blood cells), rash, pyrexia (fever), and anorexia.

## → Treatment expectations



### Side effects may occur during treatment with BORUZU®.

Be sure to stay in close communication with your healthcare provider throughout the treatment process. They may have helpful guidance for managing side effects.



Before taking BORUZU®, talk to your doctor about all your medical conditions, including if you:

- Have kidney problems
- Have diabetes
- Have liver problems
- Are pregnant or plan to become pregnant



Women should avoid becoming pregnant or breastfeeding while being treated with BORUZU®. Women should discuss with their doctor when it is safe to restart breastfeeding after finishing their treatment.

Both women who may become pregnant and men with female partners who may become pregnant should use effective contraception while taking BORUZU®. Women should continue contraceptive use for 7 months following treatment, and men should continue contraceptive use for 4 months following treatment.

### The most common side effects include:

- Nausea
- Diarrhea
- Thrombocytopenia
- Neutropenia
- Peripheral neuropathy
- Fatigue
- Neuralgia (nerve pain)
- Anemia
- Leukopenia (low levels of white blood cells)
- Constipation
- Vomiting
- Lymphopenia (low levels of a certain type of white blood cells)
- Rash
- Pyrexia (fever)
- Anorexia

Contact your doctor immediately if you experience a rash, skin pain, or any other reactions at or near where BORUZU® was injected.

## → Savings and support



### Savings

#### The Amneal PATHways® Patient Support Program

The Amneal PATHways® Patient Support Program is here to make accessing and paying for medicine as seamless as possible. When you enroll in the program, you will be connected with one of our Patient Access Specialists who will:



Help you understand your benefits and insurance coverage



Connect you with cost-saving assistance you may be eligible for



Keep you informed about program updates as they occur

#### The Amneal PATHways® Co-pay Assistance Card



Eligible\* commercially insured patients may pay as little as \$0 per treatment with an Amneal product.

#### Enroll in Amneal PATHways®



Scan the QR code to enroll in Amneal PATHways® and see what affordability options you may be eligible for.

### Support

#### Learn more about your diagnosis.

You may find it helpful to know more about your multiple myeloma or mantle cell lymphoma diagnosis and treatment. The following organizations may be able to provide you with information or support during your treatment journey.

• American Cancer Society  
[www.cancer.org](http://www.cancer.org)

• CancerCare  
[www.cancercare.org](http://www.cancercare.org)

• Multiple Myeloma Research Foundation  
[www.themmrf.org](http://www.themmrf.org)

• The ASCO Foundation  
[www.conquer.org](http://www.conquer.org)

• Cancer Support Community  
[www.cancersupportcommunity.org](http://www.cancersupportcommunity.org)

• National Cancer Institute  
[www.cancer.gov](http://www.cancer.gov)

Questions or concerns? Call 1-866-4AMNEAL (1-866-426-6325).



# Important Safety Information

## Approved Use

BORUZU® is approved for the treatment of patients with multiple myeloma (a cancer of plasma cells) and mantle cell lymphoma (a cancer of the lymph nodes).

## Administration

BORUZU® is prescribed by a physician experienced in the use of medications to treat cancer. It is administered by a healthcare professional as an injection into your vein (intravenously, or IV) or under your skin (subcutaneously).

BORUZU® must not be administered into your spinal fluid (intrathecally).

## IMPORTANT SAFETY INFORMATION

**Do not take BORUZU® if you are allergic to bortezomib, boron, mannitol, or any of the ingredients in BORUZU®.**

## WARNINGS AND PRECAUTIONS

- **Peripheral neuropathy.** BORUZU® can cause damage to the nerves outside of the brain and spinal cord, a condition called peripheral neuropathy. You may feel muscle weakness, tingling, burning, pain, and loss of feeling in your hands and feet, any of which can be severe. Tell your doctor if you notice any of these symptoms. Your doctor may change the dose and/or schedule of BORUZU® or stop it altogether.
- **Low blood pressure.** BORUZU® can cause a drop in blood pressure. Tell your doctor if you have low blood pressure, feel dizzy, or feel as though you might faint. If you are taking drugs that lower blood pressure, your medications might need to be adjusted. If you are not drinking enough liquids, your doctor may need to administer IV fluids.
- **Heart problems.** Treatment with BORUZU® can cause or worsen heart rhythm problems and heart failure. Your doctor should closely monitor you if you have, or are at risk for, heart disease. Tell your doctor if you experience chest pressure or pain, palpitations, swelling of your ankles or feet, or shortness of breath.
- **Lung problems.** There have been reports of lung disorders in patients receiving BORUZU®. Some of these events have been fatal. Tell your doctor if you experience any cough, shortness of breath, wheezing, or difficulty breathing.
- **Liver problems.** If you have liver problems, it can be harder for your body to get rid of BORUZU®. BORUZU® has caused sudden liver failure in patients who were taking many medications or had other serious medical conditions. Symptoms of liver problems include a yellow discoloration of the eyes and skin (jaundice) and changes in liver enzymes measured in blood tests. Your doctor will closely monitor you if you have liver disease.
- **Posterior reversible encephalopathy syndrome (PRES).** There have been reports of a rare, reversible condition involving the brain, called PRES, in patients treated with BORUZU®. Patients with PRES can have seizures, high blood pressure, headaches, tiredness, confusion, blindness, or other vision problems. Treatment with BORUZU® should be stopped in cases of PRES, or if PRES is suspected.
- **Gastrointestinal problems.** BORUZU® treatment can cause nausea, vomiting, diarrhea, and constipation. If your symptoms are severe, your doctor may recommend IV fluids and/or medications.
- **Neutropenia (low levels of neutrophils, a type of white blood cell).** BORUZU® can cause low levels of white blood cells (infection-fighting cells). If your white blood cells become low, you can be at higher risk for infections. Tell your doctor if you develop a fever or believe you have an infection.

- **Thrombocytopenia (low levels of platelets).** BORUZU® can cause low levels of platelets (clot-forming cells). If platelets become very low, there is an increased risk of bleeding. Your doctor may recommend a platelet transfusion. You will have regular blood tests to check your cell counts during your treatment with BORUZU®. If the number of these cells is very low, your doctor may change the dose and/or schedule of BORUZU®.
- **Tumor lysis syndrome (TLS).** TLS is a syndrome that causes a chemical imbalance in the blood that could lead to heart and/or kidney problems. TLS can occur with cancer treatments, and your doctor will be monitoring your blood and urine for any signs of this syndrome. If you develop TLS, your doctor will take appropriate steps to treat it.

## USE IN PREGNANCY

- **Embryo-Fetal Toxicity:** Women should avoid becoming pregnant or breastfeeding while being treated with BORUZU®. Discuss with your doctor when it is safe to restart breastfeeding after finishing your treatment. Use appropriate contraceptive measures when taking BORUZU®.

**More than 1 in 5 patients (20%) receiving BORUZU® have experienced the following side effects:** nausea, diarrhea, thrombocytopenia, neutropenia, peripheral neuropathy, fatigue, neuralgia (nerve pain), anemia, leukopenia (low levels of white blood cells), constipation, vomiting, lymphopenia (low levels of a certain type of white blood cells), rash, pyrexia (fever), and anorexia.

Contact your physician if you experience a rash of any type, or any other reaction near the injection site.

The side effects of BORUZU® may impair your ability to drive or operate machinery.

**These are not all the possible side effects of BORUZU®.** Tell your healthcare provider if you have any side effect that bothers you or that does not go away. For more information, ask your healthcare provider or pharmacist. Call your doctor for medical advice about side effects.

## Before taking or receiving BORUZU®, tell your doctor if you:

- Have kidney disease. If you are on dialysis, your doctor will administer BORUZU® after the dialysis procedure.
- Are taking medication for diabetes. BORUZU® can affect your blood glucose levels. Your doctor may require close monitoring of your blood glucose levels and change the dose of your diabetes medicine while you are being treated with BORUZU®.
- Have liver disease.
- Are using any other medications, including prescription and over-the-counter drugs, herbal or dietary supplements, or holistic treatments. St. John's wort should be avoided.

**Tell your healthcare provider about all the medicines you take,** including prescription and over-the-counter medicines, vitamins, and herbal supplements. BORUZU® and certain other medicines can affect each other, causing serious side effects.

**For more information about all the side effects of BORUZU®, please read the Patient Information located at the end of the Prescribing Information. You can also read the full Prescribing Information that is written for health professionals.**

**You are encouraged to report negative side effects of prescription drugs to the FDA. Visit [www.fda.gov/medwatch](http://www.fda.gov/medwatch) or call 1-800-FDA-1088.**



# Treating cancer is a team effort

Amneal Biosciences is here to support you with every aspect of your treatment journey. Our trusted patient support team members partner with your healthcare provider and treatment team, so you can start your BORUZU® treatment knowing there's always someone there to help.

## Helping you pay for your BORUZU® treatment



Learn about our affordability options offered through the Amneal PATHways® Patient Support Program by calling 1-866-4AMNEAL (1-866-426-6325).

If you have any questions about BORUZU®, ask your healthcare provider.

### IMPORTANT SAFETY INFORMATION

Women should avoid becoming pregnant or breastfeeding while being treated with BORUZU®. Discuss with your doctor when it is safe to restart breastfeeding after finishing your treatment. Use appropriate contraceptive measures when taking BORUZU®.

Please see pages 6-7 for Important Safety Information and [Boruzu.us](https://www.boruzu.us) for full [Prescribing Information](#).

[amnealbiosciences.com](https://amnealbiosciences.com) | [amneal.com](https://amneal.com)

BORUZU® is a registered trademark of Amneal Pharmaceuticals LLC.

Velcade® is a registered trademark of Millennium Pharmaceuticals, Inc.

©2025 Amneal Pharmaceuticals LLC. All rights reserved. PP-PAT-BOR-US-0001 03/25



Biosciences Oncology